



TRBONET WATCH

COMPLETE VISIBILITY FOR MOTOTRBO SYSTEMS

TRBOnet Watch is a client-server application specifically designed for technical specialists and system engineers. This software only tool, will capture (sniffs), store (logs files) and analyse all the data flowing in your MOTOTRBO radio networks providing an integrated view into the health of your network; monitoring infrastructure resource usage and allowing a user to detect topology problems (verifying that all components of the system are configured and operating correctly).

[LEARN MORE](#)



Description

The client-server nature of the solution makes it possible for you to monitor your radio system remotely, eliminating on-site visits and significantly reducing troubleshooting costs. If there are any failures, a faulty repeater or poor network connection, you will be immediately notified by TRBOnet Watch.

TRBOnet Watch is able to monitor any of Motorola's MOTOTRBO networks from single sites to Capacity Max. The software consists of three standard modules, Real-Time Monitor, Topology and Reports. These highly integrated modules will provide you with the ability to monitor activity on all radio channels, and also have a clear understanding of the system's performance in real-time. This information will assist you in understanding if the system's available resources are operating efficiently and is sufficient for your needs; bottlenecks are easily and clearly identified in your radio network.



Additional Resources

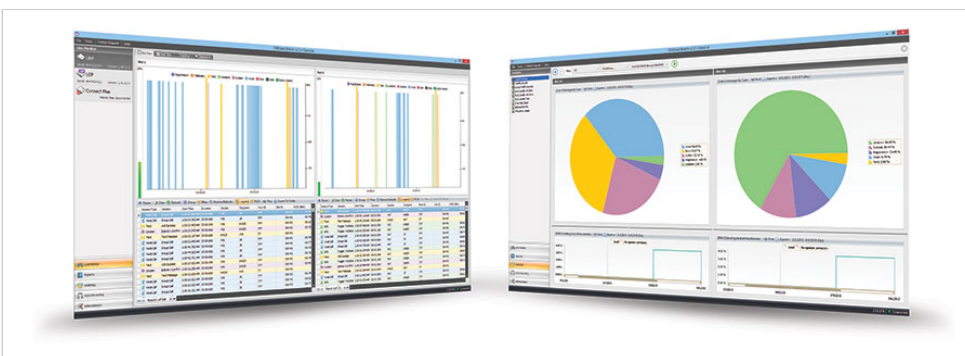
[APP WEBSITE](#)

Industry

Electricity , Emergency Medical Service (EMS) , Fire , Hotels, Resorts, Casinos and Convention Centers , Mining , Oil and Gas - Petrochemical , Police , Warehouse and Storage Companies

Supported Languages

English



Benefits

[Change Privacy Settings](#)

- Remote monitor and control of the radio system
- IP connection
- No NAI keys are required
- Audio alerts
- Email notifications
- Wide choice of reports
- Coverage maps based on RSSI
- Historical log

Features

- Real-time monitor
- Topology monitor
- Reports and analytics
- Channel usage
- RDAC alarms
- Notifications

System Requirements

- Windows 7 / 8 / 10 / Server 2008 / Server 2012 / Server 2014 for TRBOnet Watch Server
- Windows 7 / 8 / 10 for TRBOnet Watch Client

Join the Conversation:

[ABOUT US](#)

[CAREERS](#)

[COMMUNITY](#)

[INVESTOR RELATIONS](#)

[NEWSROOM](#)

MOTOROLA, MOTO, MOTOROLA SOLUTIONS and the Stylized M Logo are trademarks or registered trademarks of Motorola Trademark Holdings, LLC and are used under license. All other trademarks are the property of their respective owners.

EMEA

© 2019 Motorola Solutions, Inc. All rights reserved.

[Privacy Policy](#)

[Privacy Settings](#)

[Terms of Use](#)

[Site Map](#)

[Video Library](#)

[Feedback](#)

[Change Privacy Settings](#)